



**Black Brick**  
Finding perfect properties

8 Berkeley Gardens, W8 4AP

Asking Price £4,150,000 - Freehold  5  5  4

## Key Features

An unmodernised freehold building comprising an upper maisonette on the ground, 1st, 2nd and 3rd floors and a self contained two bedroom apartment on the lower ground floor.

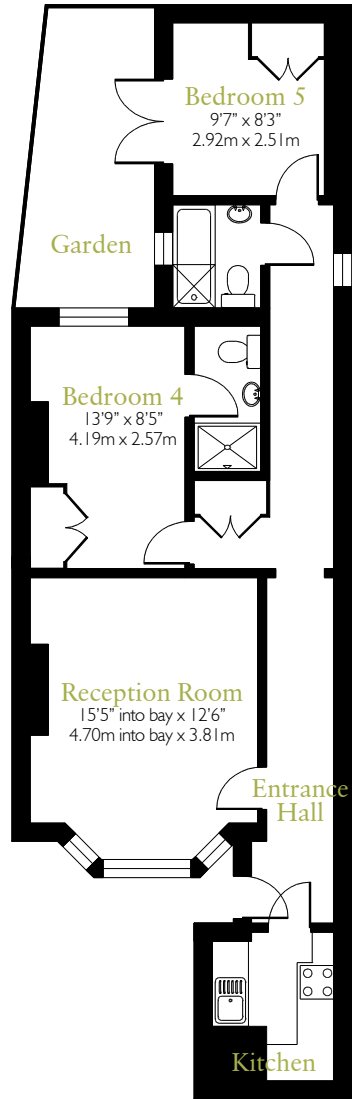
- 2677 square feet
- Requires complete renovation
- Superb location in Kensington

Tenure:  
Freehold

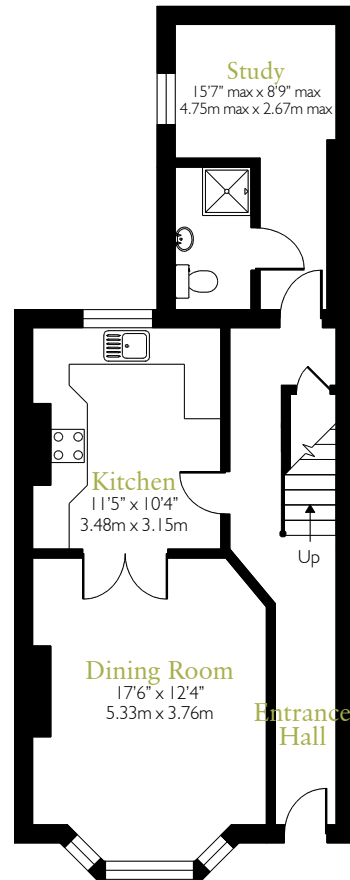


# Floor Plan

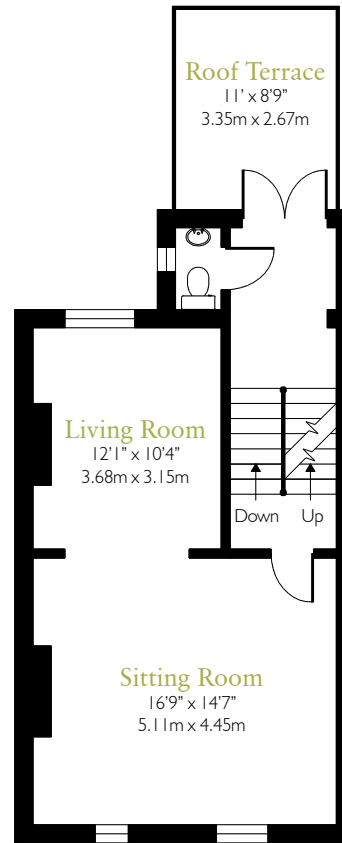
Approx. gross internal area 2677ft<sup>2</sup> / 248.7m<sup>2</sup>



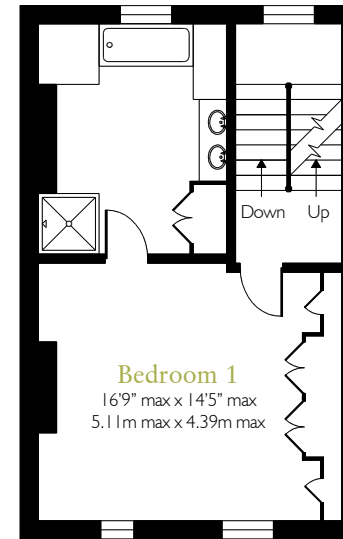
Lower Ground Floor



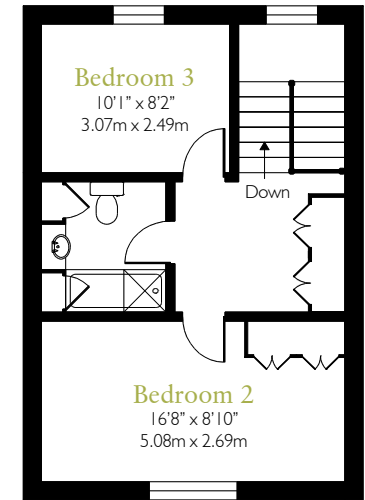
Ground Floor



First Floor



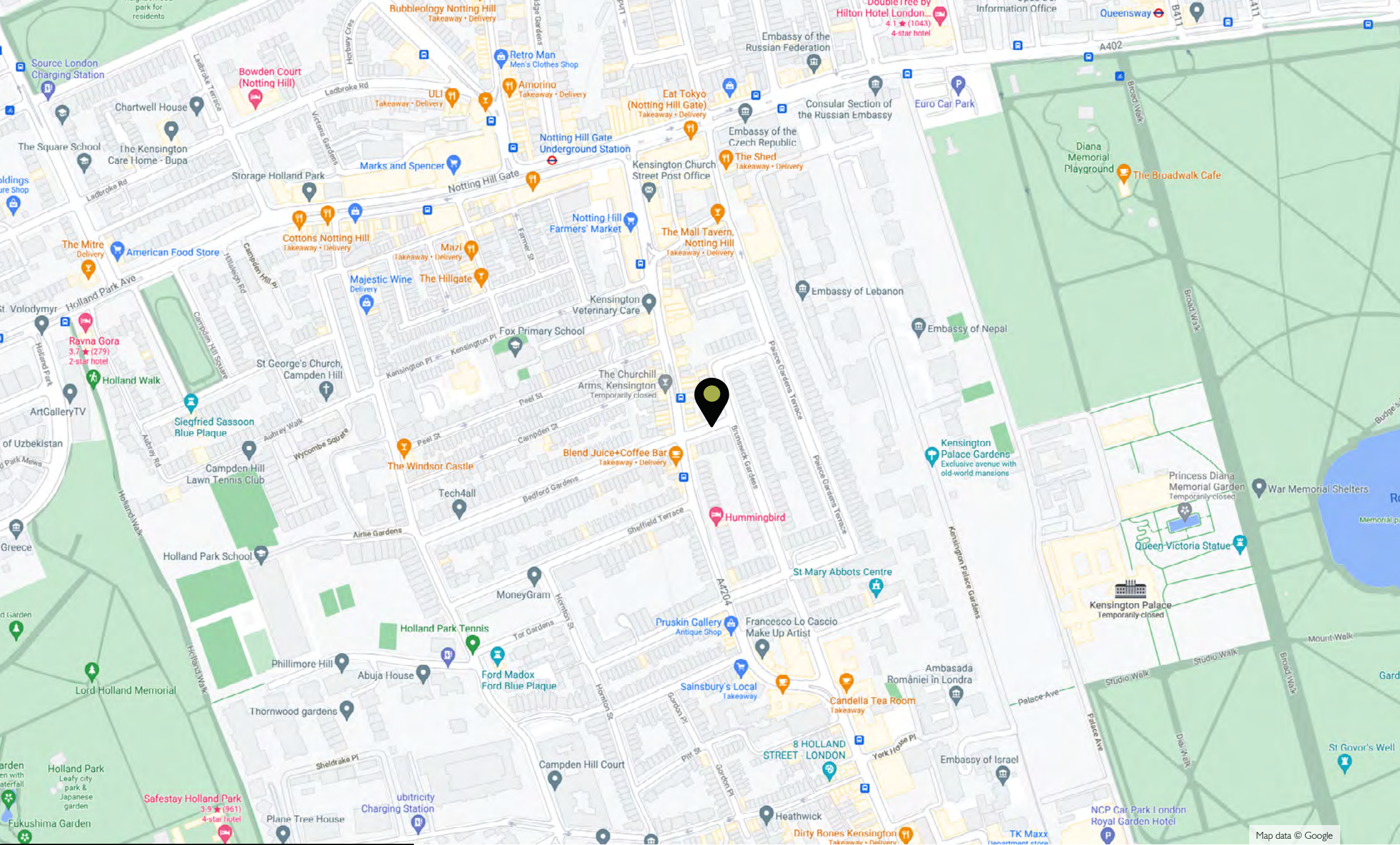
Second Floor



Third Floor

All dimensions are approximate and quoted for guidance only. Reference to appliances and/or services does not imply they are necessarily in working order or fit for purpose. Buyers are advised to obtain verification from their solicitors as to the Freehold/Leasehold status of the property and any fixtures and fittings. These particulars do not constitute or form any part of an offer or contract nor may they be regarded as representations. All interested parties must themselves verify their accuracy.





## Local Area

Berkeley Gardens is a beautiful tree lined street running between Kensington Church Street and Brunswick Gardens. The 265 acres of Kensington Gardens are less than a 10 minute walk away, whilst Notting Hill Gate is less than 5 minutes.

Local Authority:  
Royal Borough of  
Kensington and Chelsea

